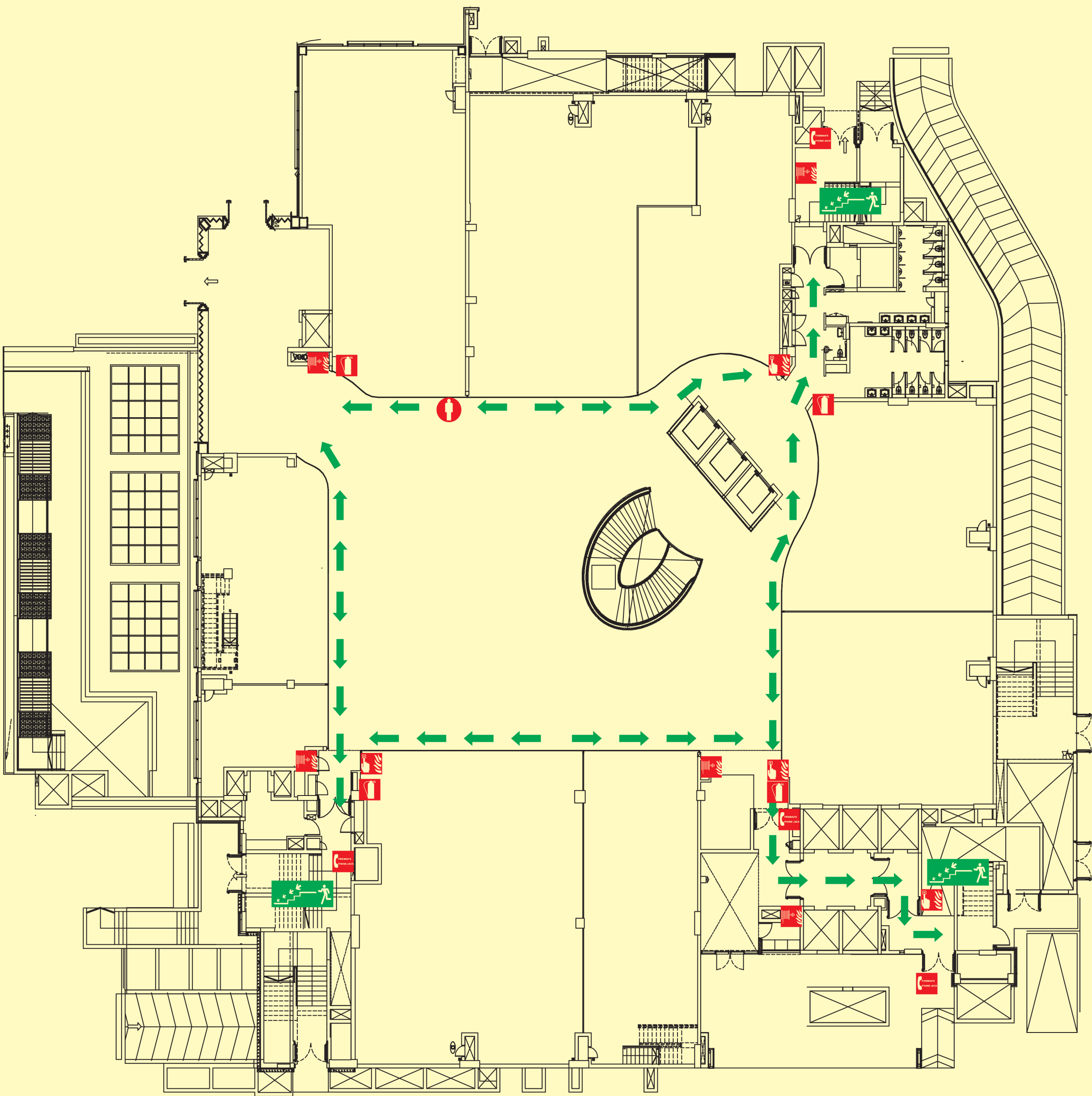


GROUND FLOOR

EVACUATION PLAN



FIRE ORDER

Actions to be taken in case of fire

1

Rescue

Rescue/Assist anyone in immediate danger

2

Alert

Activate the nearest manual call point

inform Fire & Security Control Room

3

Contain

Extinguish the FIRE if possible by available Fire Equipment

Contain the Fire by closing the doors

4

Evacuate

Evacuate the area through the Safest Exit/Emergency Exit

Report at Assembly Point of headcount

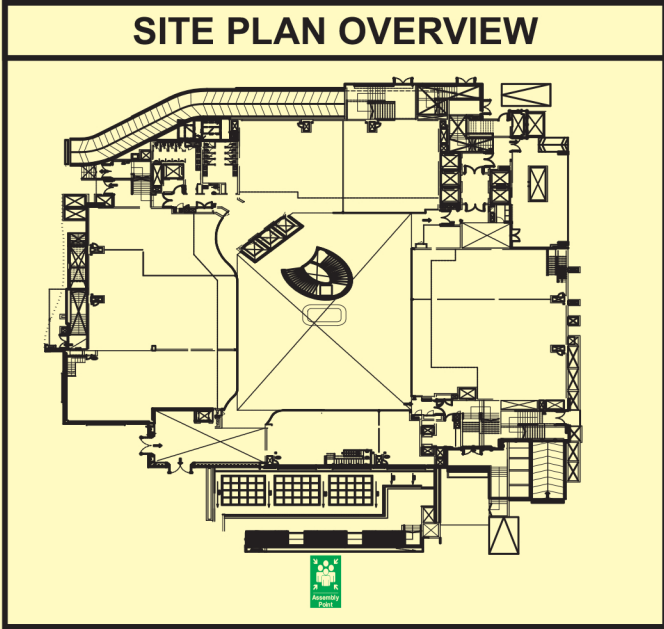
While evacuating, use staircase only

Do not Re-entre the building until "All clear" signal is given by the authorities

LEGEND			
	FIREMAN'S PHONE JACK		MANUAL CALL POINT
	YOU ARE HERE		FIRE HOSE CABINET
	FIRE STAIRCASE		FIRE EXTINGUISHER
	ESCAPE ROUTE		ASSEMBLY POINT

IN CASE OF FIRE:
DO NOT USE
THE LIFT

USE THE
STAIRS



Emergency Contact Number

Help Desk:-

Emergency Contact Number:-

Security Control Room

Fire Control Room