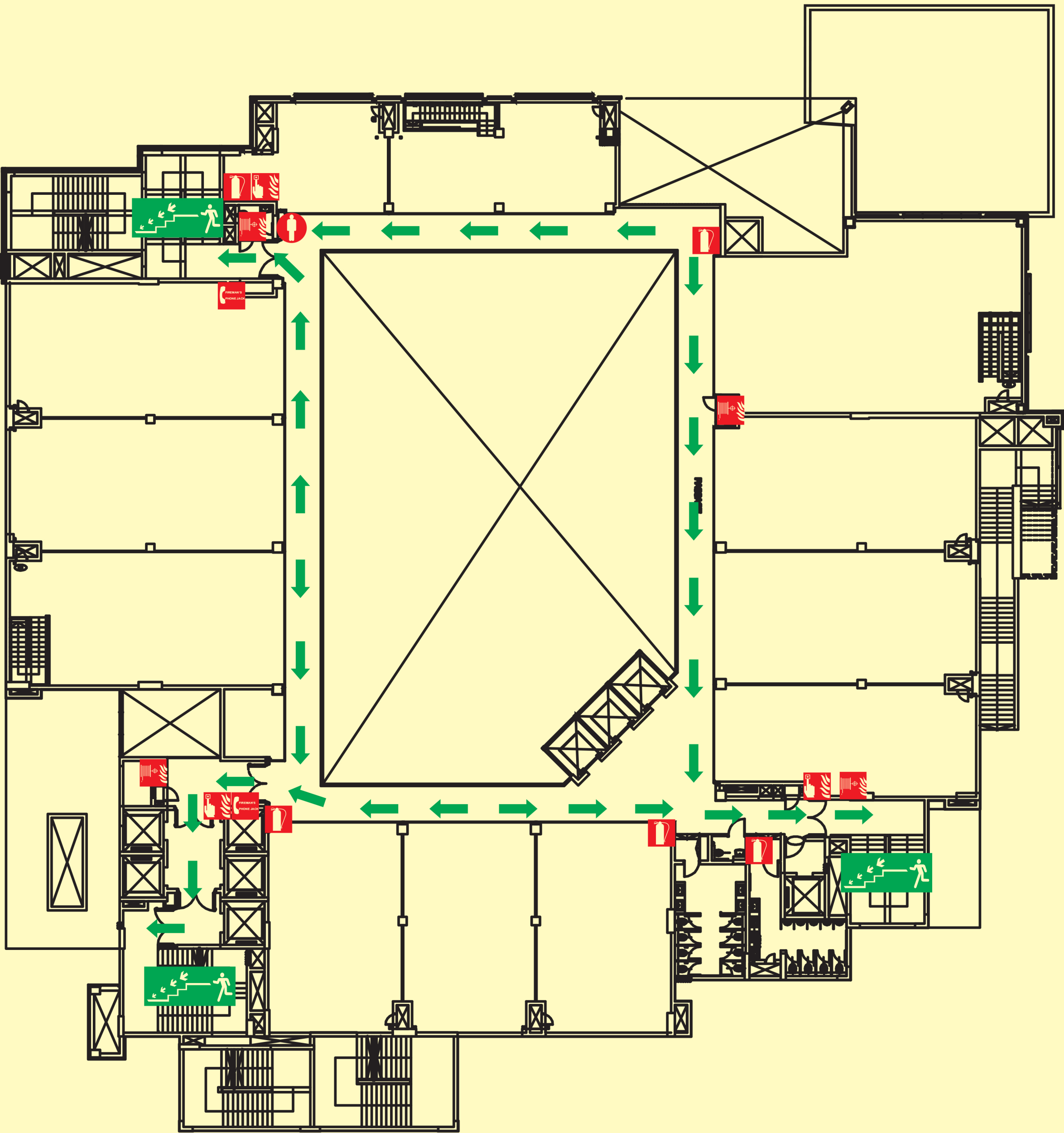




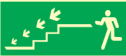





FIRST FLOOR

EVACUATION PLAN



LEGEND

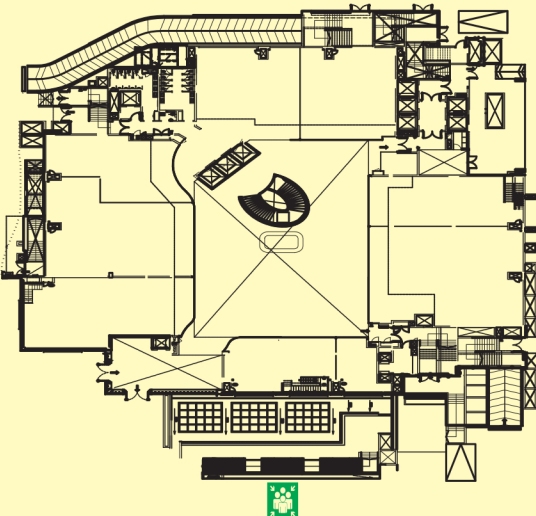
	FIREMAN'S PHONE JACK		MANUAL CALL POINT
	YOU ARE HERE		FIRE HOSE CABINET
	FIRE STAIRCASE		FIRE EXTINGUISHER
	ESCAPE ROUTE		ASSEMBLY POINT

**IN CASE OF FIRE:
DO NOT USE
THE LIFT**

**USE THE
STAIRS**



SITE PLAN OVERVIEW



FIRE ORDER

Actions to be taken in case of fire

- 1 R**escue
Rescue/Assist anyone in immediate danger
- 2 A**lert
Activate the nearest manual call point
inform Fire & Security Control Room
- 3 C**ontain
Extinguish the FIRE if possible by available Fire Equipment
Contain the Fire by closing the doors
- 4 E**vacuate
Evacuate the area through the Safest Exit/Emergency Exit
Report at Assembly Point of headcount
While evacuating, use staircase only
Do not Re-entre the building until "All clear" signal is given by the authorities

Emergency Contact Number

Help Desk:-
Emergency Contact Number:-
Security Control Room
Fire Control Room